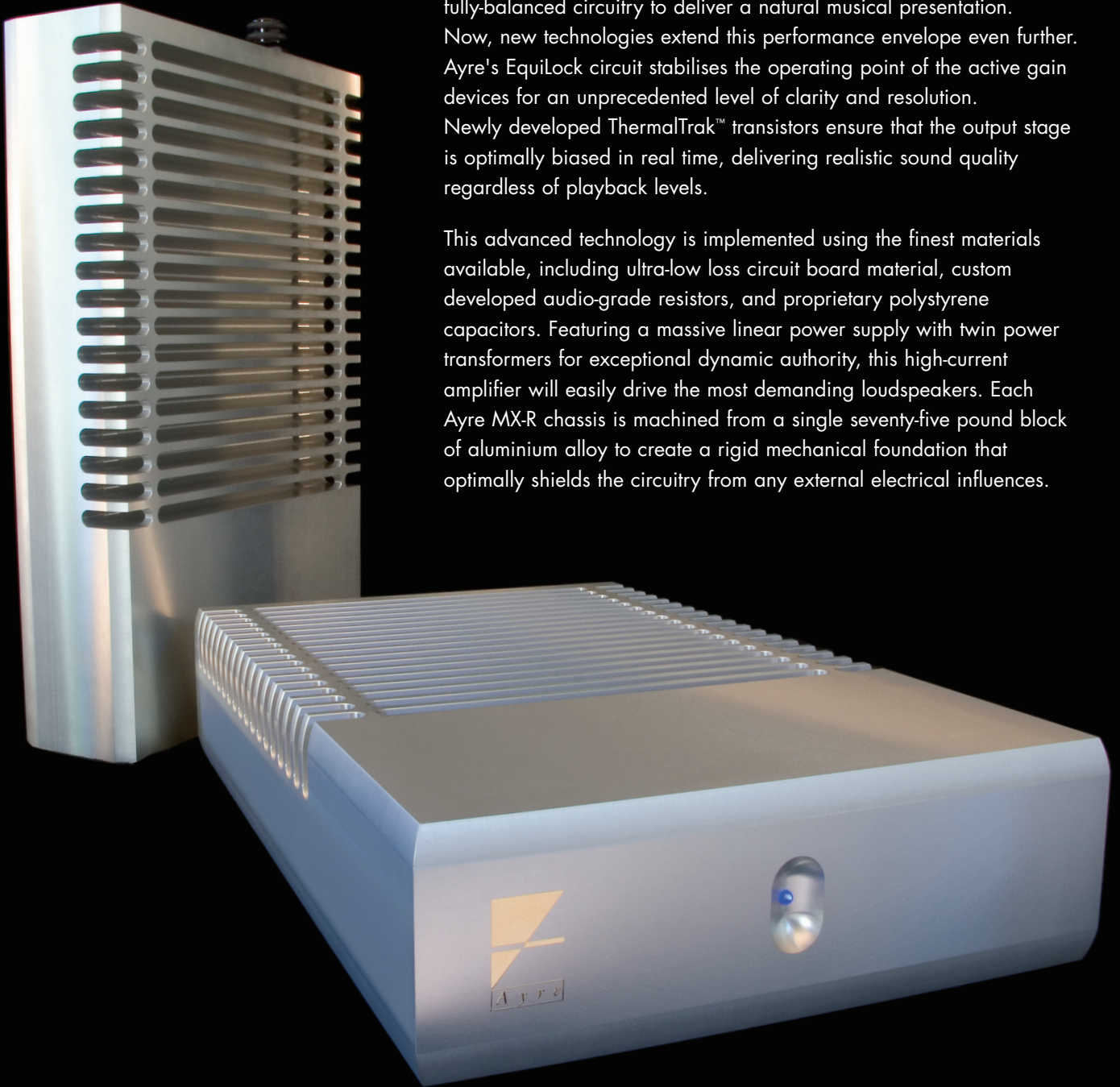


Ayre

Sacrifice nothing

For over a decade, all of Ayre's products have featured zero-feedback, fully-balanced circuitry to deliver a natural musical presentation. Now, new technologies extend this performance envelope even further. Ayre's EquiLock circuit stabilises the operating point of the active gain devices for an unprecedented level of clarity and resolution. Newly developed ThermalTrak™ transistors ensure that the output stage is optimally biased in real time, delivering realistic sound quality regardless of playback levels.

This advanced technology is implemented using the finest materials available, including ultra-low loss circuit board material, custom developed audio-grade resistors, and proprietary polystyrene capacitors. Featuring a massive linear power supply with twin power transformers for exceptional dynamic authority, this high-current amplifier will easily drive the most demanding loudspeakers. Each Ayre MX-R chassis is machined from a single seventy-five pound block of aluminium alloy to create a rigid mechanical foundation that optimally shields the circuitry from any external electrical influences.



For the ultimate in luxury, the AyreLink communication system provides integrated control functions for your Ayre system. Linked components will turn on automatically with the touch of a single button. This convenience is provided while maintaining signal purity with opto-isolators. Incorporating the most advanced technologies and design principles in the industry, the MX-R will literally change the way you listen to music.

 symmetry

t: 01727 865488

e: info@symmetry-systems.co.uk

w: www.symmetry-systems.co.uk